

# Country Elegance

A traditional home of classic proportions now resides in a picturesque rural subdivision in Matamata.

Words **Charlotte Lane** Photography **Kelvin Teixeira**



AS RETIRED DAIRY FARMERS, FINDING A PIECE OF land with a semi-rural aspect was integral to Kevin and Margaret Sing. This was balanced by their desire to live in a traditional style of home with a modern twist. “Our idea from the beginning was to have a large home on a section with a rural aspect,” says Margaret. “We liked the English village setting here, and we felt it would complement the type of home we wanted to build.”

Part of this concept was about using traditional building materials and methods, which meant they wanted a highly skilled builder working on their home. “We chose Peter Vossen from **Peter Vossen Builders Ltd** as our builder because his reputation was known to us,” explains Margaret. “We had heard great things about him, and we found him to be very committed to our project, and his workmanship was excellent.” He easily lived up to his reputation, with both Kevin and Margaret recommending him to everyone they know interested in building.

Upon recommendation by Peter, the Sings turned to Vaughan Priddey of **Concepts Architectural Design** to create the concept and working drawings for their home. “The client asked for an English styled house as part of their brief, but rural Waikato is a different setting, so the design blended aspects of the English and rural New Zealand styles,” says Vaughan. Part of the rural influence was the use of local, natural materials. “All the materials chosen had characteristics of the rural setting,” comments Vaughan, on the use of Hinuera stone and cedar. “I like how natural materials help to blend the house with its environment. It’s a timeless style that can’t be placed within a certain era.”

Builder Peter agrees that the use of local materials has created a stunning style of home, and credits the success of the new residence to the collaboration between everyone involved. “I worked with Vaughan as well as the interior designer every step of the way, and this made for an excellent project. Having as much communication with the homeowners also had a big impact on the final outcome.”

The main exterior material that was sourced locally, not to mention Kevin’s favourite aspect of the home, was the natural volcanic stone, from **Hinuera Natural Stone Ltd**. The stone cladding is kiln fired Vitric Splitstone, contrasted with Sawn Statuary kiln fired Quoin blocks for the window sills and detailing, as well as the chimney cappings. Hinuera stone is a time proven building material, sourced locally here in New Zealand, and estimated

The house is traditional in appearance, making the most of classic style on the exterior, while incorporating modern comforts inside. Hinuera stone reflects the location of the home, and adds to the country feel.



to be over one million years old. It is the only deposit of Ignimbrite, otherwise known as volcanic stone, of its type in the southern hemisphere. The paving around the home is also Hinuera Natural Stone, in a Natural Dura grade with an in-fill of kiln fired Dura for added visual effect.

The home's roof also creates a statement of style and strength. Supplied and installed by **Comag Ltd**, the roof profile is a Gerard Corona shake tile, which sits well on the high pitch of the roof. This particular product has a clean, flat profile, with a distinct character grain running through each tile. It also comes with a full 25-year weatherproof warranty, plus a diminishing pro-rata warranty for a further 25-years, along with a five-year installation warranty by the installer. Comag Ltd also completed the plumbing and drainage work on this home, coordinating with the builder as their services were required.

The exterior would not be complete without the landscaping design, which effortlessly connects the home with the surrounding neighbourhood. Landscape designer Murray Bruce of **Cambridge Landscaping Ltd** laid the lawn to enhance the English country theme. Murray also installed the exposed aggregate driveway, which totals a large 500 square metres. "It is the largest pour in one day that we have ever completed," says Murray. "It took six men all day, but it was worth it because it meant the entire drive would have the exact same finish."

**FACING PAGE** Margaret wanted a traditional kitchen layout, with bench space on three sides. This allowed all of the appliances and the pantry to be only a step or two away from one another. The wrought iron balustrade leading up the stairs is finished with a Rimu handrail, made from timber sourced from a friend's farm.



**ABOVE TOP** A large patio area is covered by a roof, with skylight windows set into the high-pitch profile. This allows the area to be filled with light, and outdoor entertaining can be enjoyed regardless of the weather.

**THE SPECS**

Matamata  
\$600,000 +  
366 Sq m





## Our Place with Margaret & Kevin Sing

### What design brief did you start with?

We wanted a house that faced the sun, with great indoor/outdoor flow and the master bedroom on the ground floor. We also wanted living spaces that flowed, but with the ability to close the lounge off.

### Favourite room?

Margaret: The dining/family room, because you can sit and relax, read a book, watch television, or just gaze out the window.

Kevin: Our bedroom, because we can pull back the drapes and lie in bed, looking out across the subdivision. I really like the office too, because there is space for everything, and great desk space. I have a lower desk to work at and Margaret has a higher one so she can stand and do her scrap booking.

### Favourite purchase?

Margaret: All the little things around the house, like the art hanging above the fireplace. It is a photo of Mt. Denali in Alaska that we purchased while we were away on holiday. We had it framed on our return and it fits the room perfectly.

Kevin: My favourite major purchase is the stone work, and inside it is small items that create a rural theme, like the china cows. We're ex-dairy farmers so it's good to keep that connection.

### What do you enjoy most about your home?

The sense of space, and just the fact that we have a home that easily accommodates visitors. Because we have all the guest rooms upstairs, it's great having guests to stay.



**ABOVE** The master bedroom is on the ground floor, which was a way of future proofing the home to ensure Kevin and Margaret could live there comfortably in years to come. Doors open out directly to a private patio. Two guest bedrooms are located on the second floor.

The Sings wanted to extend the exterior style of their house inside too, and they credit their interior designer for the succinct flow and look inside. "Eleanor Taylor worked tirelessly on our home, and she coordinated so much of the furnishing and fittings," says Margaret. One interior feature they particularly like is the iron work that extends up the staircase, complemented by a wooden handrail made from Rimu off a friend's farm. The ironwork itself was designed by Eleanor and created by **Iron Design Ltd.** They handcrafted the balustrade for Kevin and Margaret, carefully producing the grape and vine design the client requested. Iron Design

Ltd specialise in the production of quality, custom made pieces, creating unique designs from the measure to manufacture stage. This particular production, which is like an elegant artwork in its own right, has been finished with elegant hand painting.

Warm neutral colours feature throughout the home, and this muted colour palette has been reflected in the floor coverings. **Van Dyks Flooring Xtra** supplied a hardwearing Victoria carpet, in Glacial Goldleaf. The carpet is made from 100% solution dyed nylon, in a textured finish, and placed over a luxury 11mm foam underlay. Solution dyed nylon is becoming a



**ABOVE** The living room has been styled to a traditional brief, in keeping with the home's design. The gas fire provides a strong focal point, with the homeowner's favourite piece of art displayed above the mantel.

popular choice in new homes, because it is highly fade resistant, and is very easy to maintain and remove stains from. The colourfast feature is a major benefit in homes with floor to ceiling windows and extended open-plan flow.

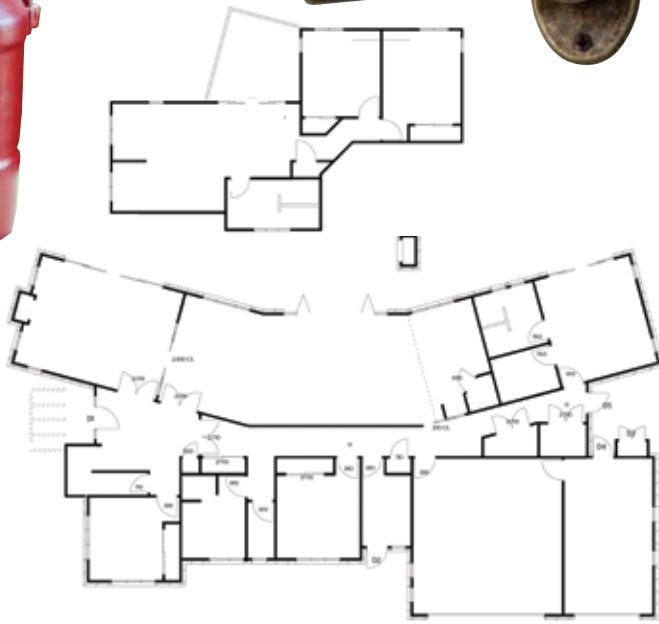
The interior is also enhanced by strategically placed lighting, which illuminates key areas in the home, as well as assisting the natural light flowing inside. **Vogue Lighting** completed a full lighting plan for the Sings, which included placement for every light and electrical outlet in the house, as well as a full product specification report. Quality is evident in all the fittings chosen, with hand blown glass from Germany used in the pendants and wall fixtures, and a lighting system to create a "starry night" effect at the entry. Outside, copper lights were placed to draw attention to the stonework. Copper is of the highest quality, making it an ideal material for exterior lighting.

The lighting also enhances the outdoor room; an area Margaret and Kevin often enjoy when friends are visiting. This space is a natural extension

of the home, accessible via large bi-fold doors, with overhead fixed windows encouraging sun and natural light. To make the area even more special, the Sings selected a Warmington outdoor Nouveau gas fire from **Rotorua Heating Solutions Ltd.** Made in New Zealand, the fire allows Margaret and Kevin to sit outside even when the weather is cool, and it creates a striking exterior focal point at night. There is also a Warmington fire inside, specifically the SG900 model, which is a secondary source of heating for the home. The fire throws out powerful heat, and it is very functional and aesthetically attractive, particularly in this setting with a unique tiled wall in the background.

Following a recent holiday which saw the Sings leave their new house shortly after moving in, Margaret wondered how it would feel returning to their residence. "Thankfully it felt great, it was like being at home even though we hadn't lived here for long. It has honestly felt like that right from the first day we moved in." They have no plans to build again, with this home ticking all the boxes for the now retired couple. ■





Vision Wallcoverings  
Bloomsbury wallpaper

## Materials

**ART** A photo purchased while travelling overseas depicts Mt Denali in Alaska. It was framed upon their return.

**LIGHTING** Copper hanging lights from Vogue Lighting.

**ROOF** A Gerard Corona Shake tile was used for the high pitched roof.

**ACCESSORIES** The homeowners sourced classic accessories such as antique style door handles and switches. The red milk can is from Tasman Cottage Pottery.

## Directory

### BUILDER

Peter Vossen Builders Ltd  
0274 969 537  
[www.petervossenbuilders.co.nz](http://www.petervossenbuilders.co.nz)

### DESIGN

Concepts Architectural Design  
07 855 2586  
[www.conceptsdesign.co.nz](http://www.conceptsdesign.co.nz)

### BALUSTRADE

Iron Design  
07 577 6089  
[www.irondesign.co.nz](http://www.irondesign.co.nz)

### BRICKLAYING

Matamata Bricklayers Ltd  
0274 799 933

### BUILDING SUPPLIES

PlaceMakers Morrinsville  
07 889 5142  
[www.placemakers.co.nz](http://www.placemakers.co.nz)

### CARPET

Van Dyks Flooring Xtra  
07 883 7535  
[www.flooringxtra.co.nz](http://www.flooringxtra.co.nz)

### CLADDING

Hinuera Natural Stone  
0800 446 837  
[www.hinuera.co.nz](http://www.hinuera.co.nz)

### FIRE

Rotorua Heating Solutions  
07 346 2694  
[www.heatingsolutions.co.nz](http://www.heatingsolutions.co.nz)

### LANDSCAPING

Cambridge Landscaping Ltd  
0274 755 762

### LIGHTING

Vogue Lighting  
07 575 4784  
[www.voguelighting.co.nz](http://www.voguelighting.co.nz)

### PAINTING

Nu Line Decorators  
0274 476 3618

### ROOFING

Comag Ltd  
07 888 8883  
[www.comagltd.co.nz](http://www.comagltd.co.nz)